

MANHASSET QUEEN 64,000 MT Bulk Carrier 52



Contents



By Builder



By Ship Type





Contents

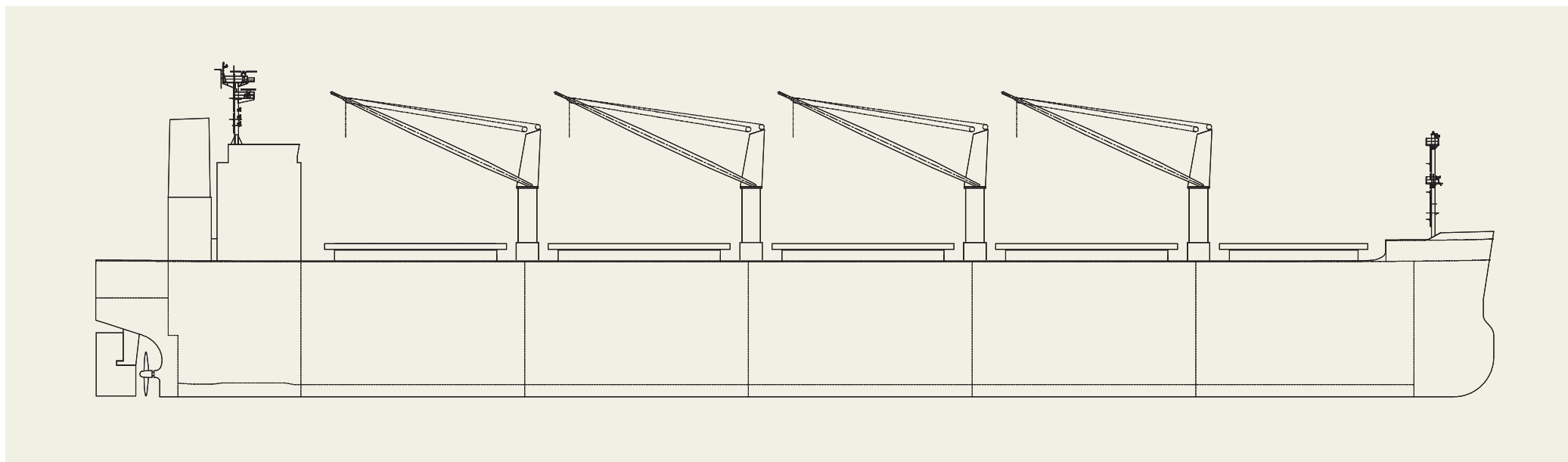


By Builder



By Ship Type

MANHASSET QUEEN 64,000 MT Bulk Carrier 52



PRINCIPAL PARTICULARS

Length (o.a.) 199.98 m
 Breadth (mld.) 32.24 m
 Depth (mld.) 19.30 m
 Gross tonnage 36,139
 Deadweight 63,654 tons

Main engine 6S50ME-C9.7
 Speed (service) abt.14.0 knots
 Classification NK
 Builder Imabari Shipbuilding Co., Ltd. /
 Head Office & Imabari Shipyard

PORT NARA 64,611 DWT Bulk Carrier 53



Contents



By Builder



By Ship Type





Contents



By Builder



By Ship Type

PORT NARA 64,611 DWT Bulk Carrier 53

Oshima Shipbuilding Co., Ltd. delivered PORT NARA, a 64,611-DWT bulk carrier, to GARNET OCEANWAY LIMITED in March 2024.

Features

1. This vessel has an optimized hull form for carrying grain, ore, coal and hot coil and large deadweight (64,611MT) with shallow draft (13.518 m).
2. Wide opening folding type hatch cover and four sets of high performance Jib cranes (30MT) are installed for efficient cargo handling.
3. Advanced Flipper Fins & Rudder Fin which improve

PRINCIPAL PARTICULARS

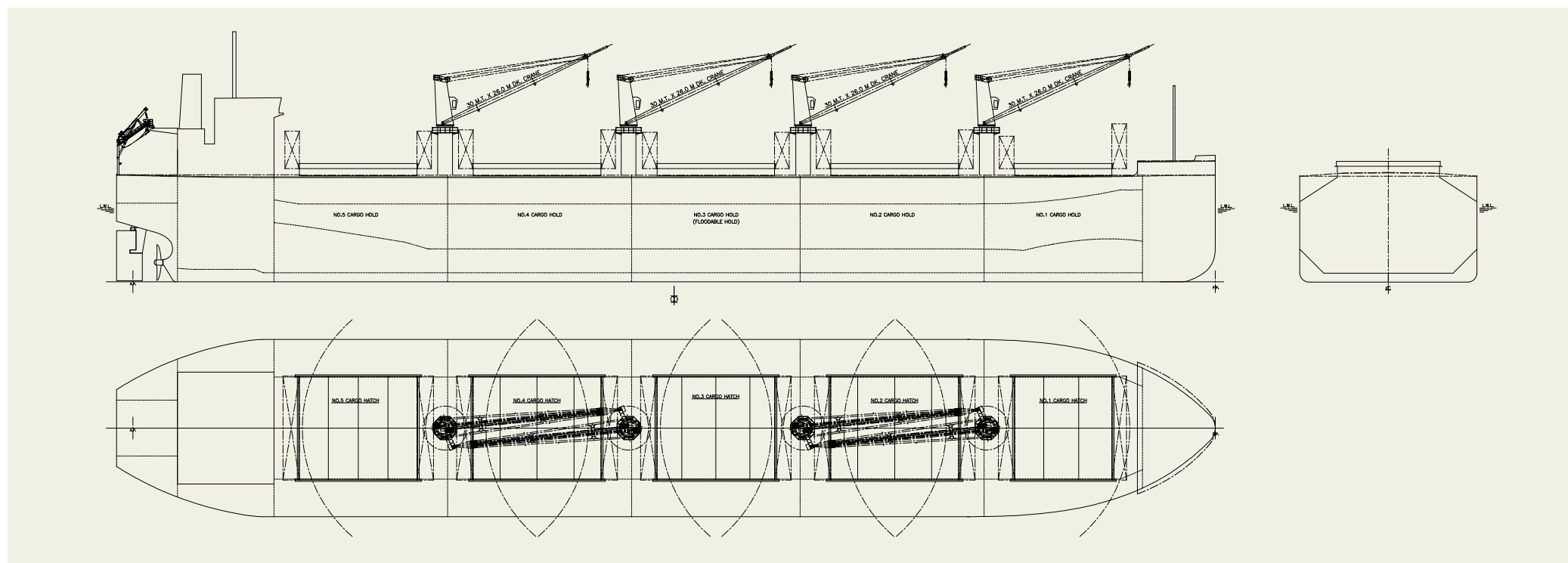
Length (o.a.).....	199.95 m
Breadth (mld.).....	32.26 m
Depth (mld.).....	19.28 m
Draft (mld.).....	13.518 m
Gross tonnage.....	36,091
Deadweight.....	64,611 MT

Main engine.....	J-ENG UE 6UEC50LSH-Eco-C3-EGR
MCR (kw x rpm).....	7,080 kW x 91.0 rpm
Speed (service).....	14.50 knots
Complement.....	25
Classification.....	ABS
Loading capacity (grain).....	81,268 m ³
Builder.....	Oshima Shipbuilding Co., Ltd.

propulsion efficiency are installed.

ordinary bows.

4. Special bow form, Seaworthy Bow improves speed performance in rough sea conditions as compared to



AQUAVITA WEALTH 64,700 DWT Bulk Carrier 54



Contents



By Builder



By Ship Type





Contents



By Builder



By Ship Type

AQUAVITA WEALTH 64,700 DWT Bulk Carrier 54

Oshima Shipbuilding Co., Ltd. delivered AQUAVITA WEALTH, a 64,700-DWT bulk carrier, to WEALTH LINE INC. in March 2024.

Features

1. This vessel has an optimized hull form for carrying grain, ore, coal and hot coil and large deadweight (64,700MT) with shallow draft (13.518 m).
2. Wide opening folding type hatch cover and four sets of high performance Jib cranes (30MT) are installed for efficient cargo handling.
3. Advanced Flipper Fins & Rudder Fin which improve

PRINCIPAL PARTICULARS

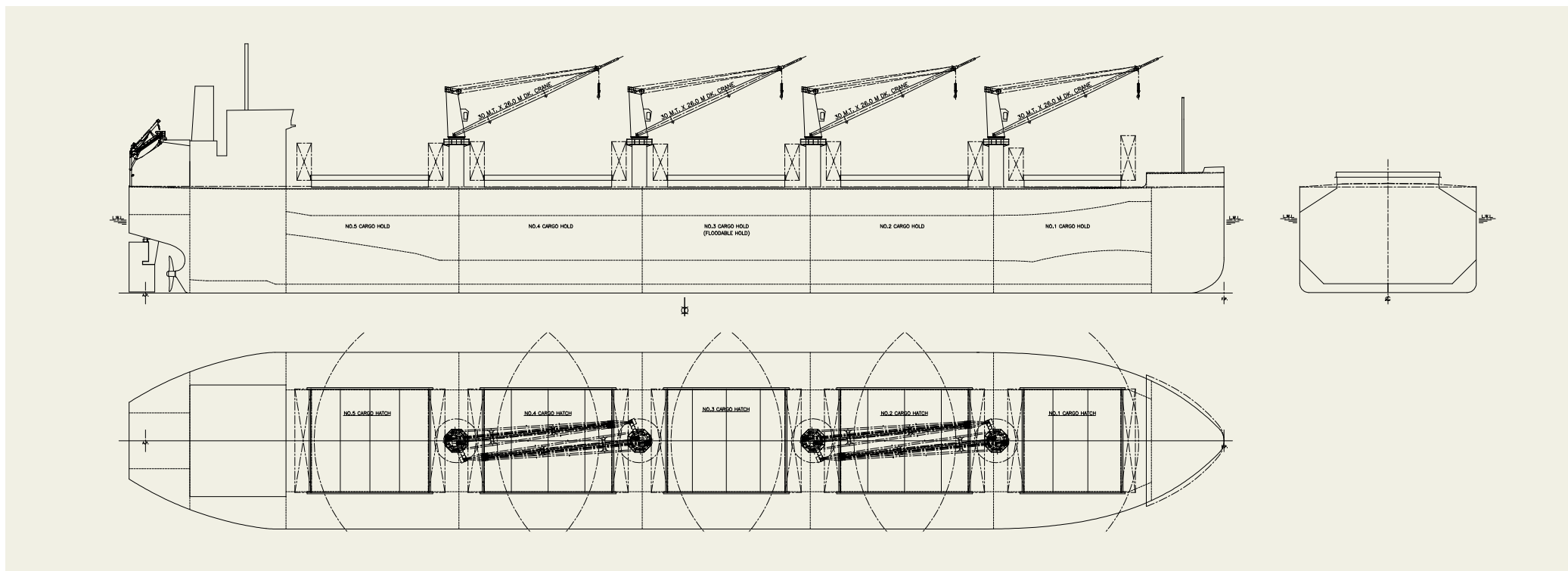
Length (o.a.).....	199.95 m
Breadth (mld.).....	32.26 m
Depth (mld.).....	19.28 m
Draft (mld.).....	13.518 m
Gross tonnage.....	36,157
Deadweight.....	64,700 MT

Main engine.....	MITSUI-MAN B&W 6S50ME-C9.7-EGRBP
MCR (kw x rpm).....	7,080 kW x 91.0 rpm
Speed (service).....	14.50 knots
Complement.....	25
Classification.....	NK
Loading capacity (grain).....	81,268 m ³
Builder.....	Oshima Shipbuilding Co., Ltd.

propulsion efficiency are installed.

ordinary bows.

4. Special bow form, Seaworthy Bow improves speed performance in rough sea conditions as compared to



TAI STEADINESS 64,589 DWT Bulk Carrier 55



Contents



By Builder



By Ship Type





Contents



By Builder



By Ship Type

TAI STEADINESS 64,589 DWT Bulk Carrier 55

Oshima Shipbuilding Co., Ltd. delivered TAI STEADINESS, a 64,589-DWT bulk carrier, to TAI SHING MARITIME CO., S.A. in March 2024.

Features

1. This vessel has an optimized hull form for carrying grain, ore, coal, hot coil, cement, sulphur and salt and large deadweight (64,589MT) with shallow draft (13.518 m).
2. Wide opening folding type hatch cover and four sets of high performance Jib cranes (30MT) are installed for efficient cargo handling.
3. Advanced Flipper Fins & Rudder Fin which improve

PRINCIPAL PARTICULARS

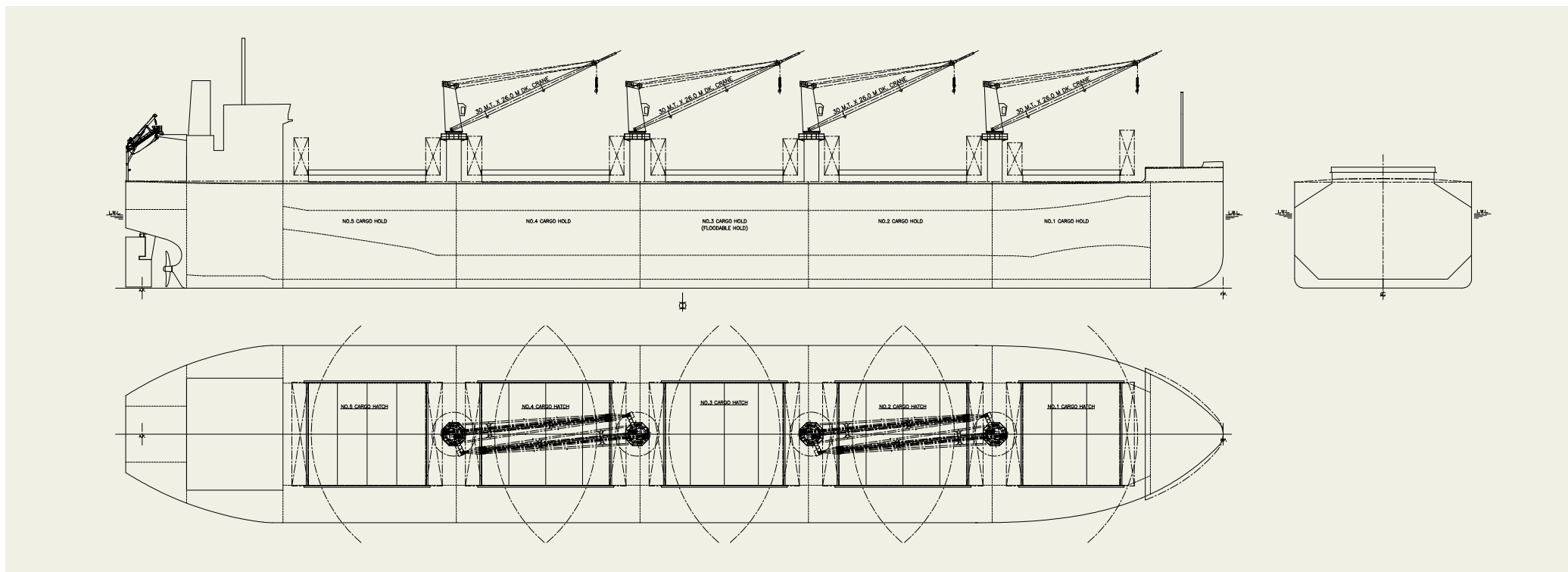
Length (o.a.).....	199.95 m
Breadth (mld.).....	32.26 m
Depth (mld.).....	19.28 m
Draft (mld.).....	13.518 m
Gross tonnage.....	36,090
Deadweight.....	64,589 MT

Main engine.....	MITSUI-MAN B&W 6S50ME-C9.7-EGRBP
MCR (kw x rpm).....	7,080 kW x 91.0 rpm
Speed service.....	14.50 knots
Complement.....	25
Classification.....	LR/CR
Loading capacity (grain).....	81,267 m ³
Builder.....	Oshima Shipbuilding Co., Ltd.

propulsion efficiency are installed.

ordinary bows.

4. Special bow form, Seaworthy Bow improves speed performance in rough sea conditions as compared to



GREEN WINDS 63,896 DWT Bulk Carrier 56



Contents



By Builder



By Ship Type





Contents



By Builder



By Ship Type

GREEN WINDS 63,896 DWT Bulk Carrier 56

Oshima Shipbuilding Co., Ltd. delivered GREEN WINDS, a 63,896-DWT bulk carrier, to DRAGONFLY MARITIME INC. in July 2024.

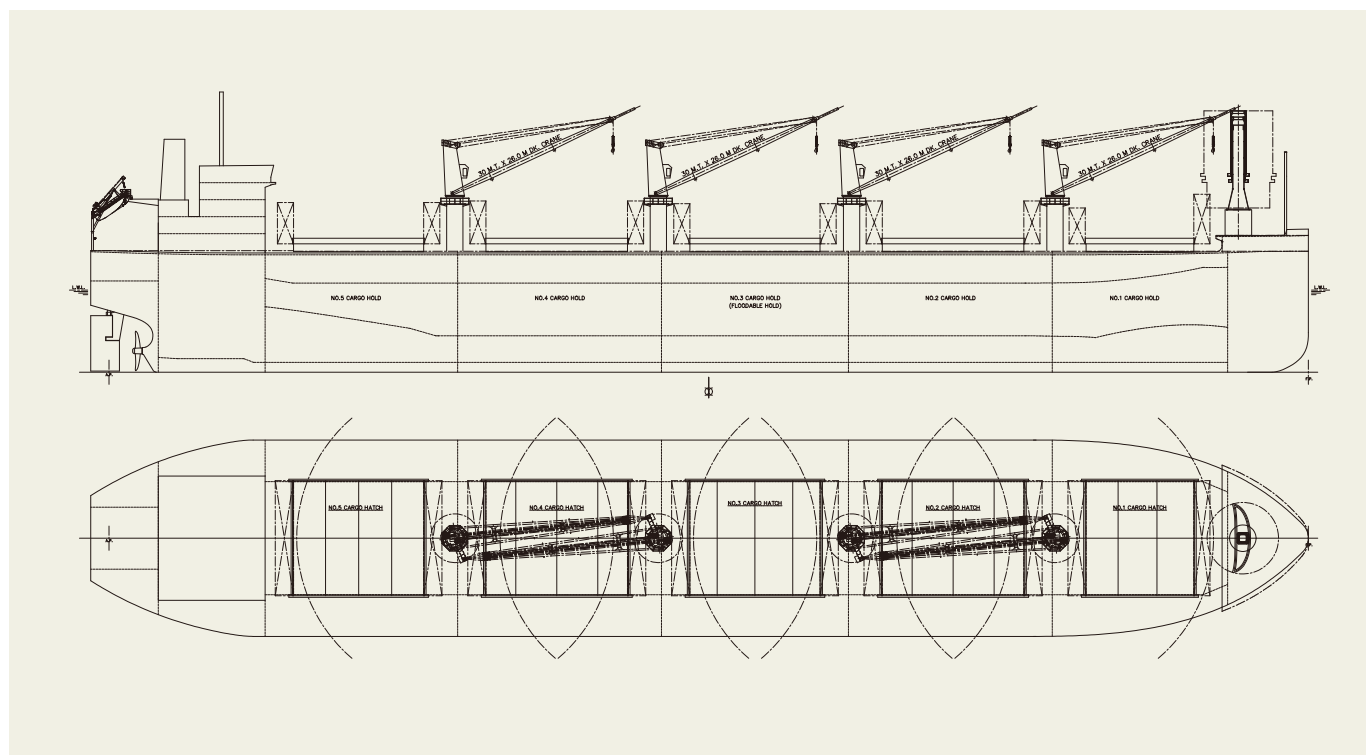
Features

1. This vessel has an optimized hull form for carrying grain, ore, coal and hot coil and large deadweight (63,896MT) with shallow draft (13.518 m).
2. Wide opening folding type hatch cover and four sets of high performance Jib cranes (30MT) are installed for efficient cargo handling.
3. This is the delivered vessel with a rigid sail, so-called "Wind Challenger" which is wind power propulsion system.
4. The rigid sail which consist of two FRP (Fiber Reinforced Plastics) sails and one steel sail is extended and reefed automatically in response to the wind conditions and ship motion.
5. The height of the sail from the main deck is about 39m with all sails fully extended and is about 21m with all sails reefed, and the direction of the sail can rotate 180 degrees.
6. The width of the sail is about 11.4m and complies with SOLAS regulation for visibility from wheel house.
7. By slewing in an appropriate direction, a large amount of wind forces is converted into the propulsive force of the ship and reduce fuel consumption.
8. Advanced Flipper Fins & Rudder Fin which improve propulsion efficiency are installed.
9. Special bow form, Seaworthy Bow improves speed performance in rough sea conditions as compared to ordinary bows.

PRINCIPAL PARTICULARS

Length (o.a.).....	199.95 m
Breadth (mld.).....	32.26 m
Depth (mld.).....	19.28 m
Draft (mld.).....	13.518 m
Gross tonnage.....	36,498
Deadweight.....	63,896 MT

Main engine.....	MITSUI-MAN B&W 6S50ME-C9.7-EGRBP
MCR (kw x rpm).....	7,080 kW x 91.0 rpm
Speed (service).....	14.50 knots
Complement.....	26
Classification.....	NK
Loading capacity (grain).....	81,177 m ³
Builder.....	Oshima Shipbuilding Co., Ltd.



AQUAGRACE 64,678 DWT Bulk Carrier 57



Contents



By Builder



By Ship Type





Contents



By Builder



By Ship Type

AQUAGRACE 64,678 DWT Bulk Carrier 57

Oshima Shipbuilding Co., Ltd. delivered AQUAGRACE, a 64,678-DWT bulk carrier, to CASTLE SHIPMANAGEMENT S.A. in August 2024.

Features

1. This vessel has an optimized hull form for carrying grain, ore, coal and hot coil and large deadweight (64,678MT) with shallow draft (13.518 m).
2. Wide opening folding type hatch cover and four sets of high performance Jib cranes (30MT) are installed for efficient cargo handling.
3. Advanced Flipper Fins & Rudder Fin which improve propul-

PRINCIPAL PARTICULARS

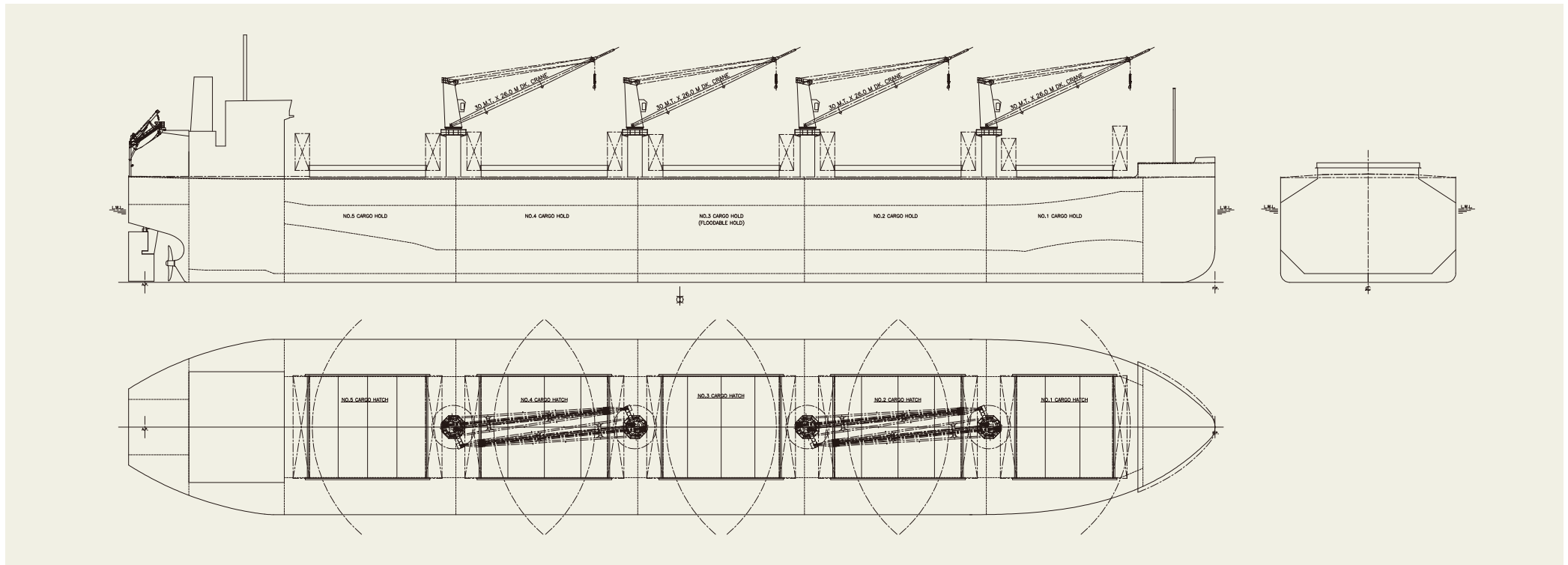
Length (o.a.).....	199.95 m
Breadth (mld.).....	32.26 m
Depth (mld.).....	19.28 m
Draft (mld.).....	13.518 m
Gross tonnage.....	36,068
Deadweight.....	64,678 MT

Main engine.....	MITSUI-MAN B&W 6S50ME-C9.7-EGRBP
MCR (kw x rpm).....	7,080 kW x 91.0 rpm
Speed (service).....	14.50 knots
Complement.....	25
Classification.....	ABS
Loading capacity (grain).....	81,215 m ³
Builder.....	Oshima Shipbuilding Co., Ltd.

sion efficiency are installed.

4. Special bow form, Seaworthy Bow improves speed performance in rough sea conditions as compared to

ordinary bows.



ARIES MIZUKI

64,000 DWT Bulk Carrier 58



Contents



By Builder



By Ship Type





Contents



By Builder



By Ship Type

ARIES MIZUKI 64,000 DWT Bulk Carrier 58

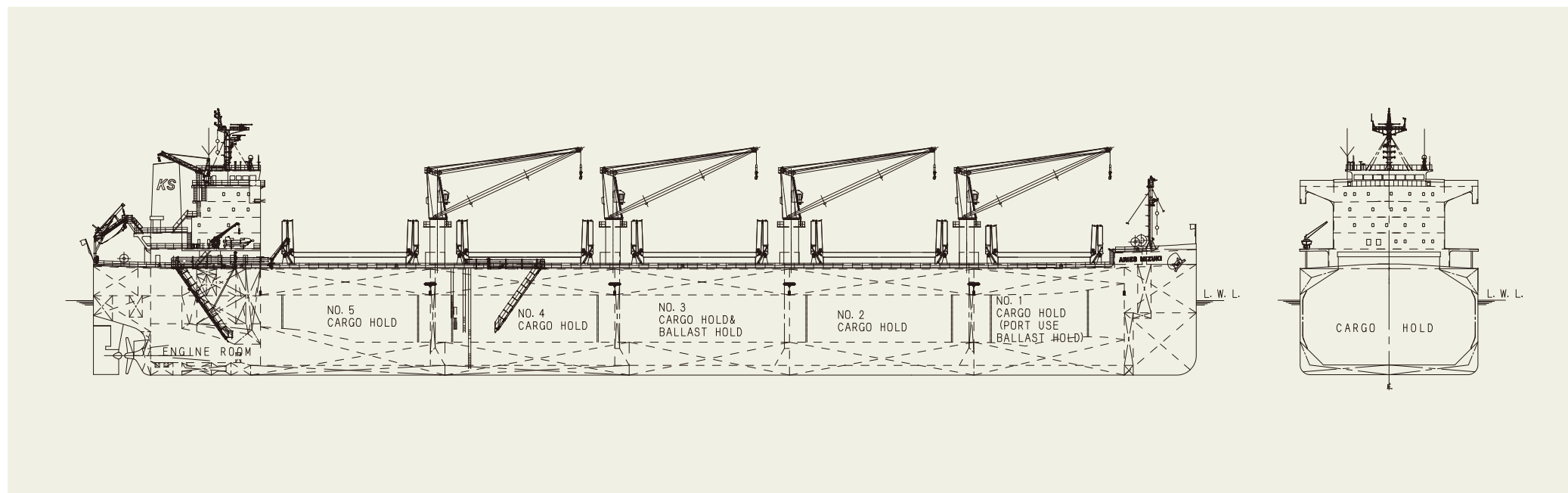
The 64,000 dwt type bulk carrier ARIES MIZUKI was built at SHIN KURUSHIMA SANOYAS SHIPBUILDING CO., LTD. and delivered to CASSIOPEIA MARINE S.A. in June 2025.

Features

1. The vessel has five (5) cargo holds.
2. The upper deck hatch covers are folding type and operated by hydraulic cylinders.
3. The vessel has four (4) sets of 31-ton electro-hydraulic type single deck cranes.

PRINCIPAL PARTICULARS

Length (o.a.).....	199.99 m	MCR (kw x min ⁻¹).....	6,650 kW x 88.8 min ⁻¹
Length (b.p.).....	197.30 m	NOR (kw x min ⁻¹).....	5,650 kW x about 84.1 min ⁻¹
Breadth (mld.).....	32.24 m	Speed (service).....	abt. 14.1 knots
Depth (mld.).....	19.22 m	Complement.....	25 P
Draft (mld.).....	11.30 m	Classification.....	NK
Gross tonnage.....	36,372	Loading capacity (grain).....	81,490 m ³
Deadweight.....	63,810 t	(bale).....	78,218 m ³
Main engine.....	mitsui-man B&W 6S50ME-C9.7-EGRBP	Builder.....	Shin Kurushima Sanoyas Shipbuilding Co., Ltd.



TESS66 Aeroline Methanol Dual Fuel 65,700 MT Bulk Carrier 59



Contents



By Builder



By Ship Type





Contents



By Builder



By Ship Type

TESS66 Aeroline Methanol Dual Fuel 65,700 MT Bulk Carrier 59

Features

1. Comply with EEDI Phase 3 regulations.
2. The unique "AEROLINE" shape reduces wind pressure resistance by approximately 20% at the bow and living quarters, improving fuel efficiency in actual sea conditions.
3. Equipped with the environmental technologies devices to prevent the air pollution from the NOx and SOx emissions and marine pollution from the oil spillages, etc.
4. TESS64 maintains the same width (Panama Canal width) and overall length (200m) as AEROLINE to preserve versatility.
5. Excellent trading flexibility for carrying the three major bulk cargoes of iron ore, grains, and coal, as well as hot coils.
6. With a cargo capacity of 81,500m³, it can carry large

PRINCIPAL PARTICULARS

Length (o.a.).....	less than 200.00 m	Gross tonnage	38,300
Breadth (mld.).....	32.25 m	Deadweight	65,700 mt
Depth (mld.).....	19.15 m	Loading capacity	81,500 m ³
Draft (mld.).....	13.80 m	Builder.....	Tsuneishi Shipbuilding Co.,Ltd.

- volumes of low-density cargo, such as grains.
7. The original interior concept NEXT STYLE, utilizing exquisite design and indirect lighting, provides the crew with relaxation and comfort.
 8. Using methanol as fuel can reduce nitrogen oxides (NOx)

by up to approximately 80%, sulfur oxides (SOx) by up to 99%, and carbon dioxide (CO₂) by up to approximately 10% compared to heavy oil.

