

REIMEI 95,792 DWT LNG-DF Bulk Carrier 43



Contents



By Builder



By Ship Type



PRINCIPAL PARTICULARS

Length (o.a.).....	234.92 m	Gross tonnage.....	54,684	Complement.....	28
Breadth (mld.).....	38.00 m	Deadweight.....	95,792 t	Classification.....	Nippon Kaiji Kyokai (NK)
Draft (mld.).....	14.40 m	Main engine.....	WinGD 6X62DF	Builder.....	Namura Shipbuilding Co., Ltd.

CEMTEX UNITY 99,990 DWT Bulk Carrier 44



Contents



By Builder



By Ship Type



CEMTEX UNITY 99,990 DWT Bulk Carrier 44

Oshima Shipbuilding Co., Ltd. delivered CEMTEX UNITY, a 99,990-DWT bulk carrier, U-Ming Marine Transport (Hong Kong) Limited in October 2023.

Features

1. This vessel has an optimized hull form for carrying grain, ore, coal, hot coil and steel plate, and large deadweight (99,990 MT) with shallow draft (14.415m).
2. This vessel has large collecting tank for storage of hold wash water, deck wash water.
3. Advanced Flipper Fins & Rudder Fin which improve propul-

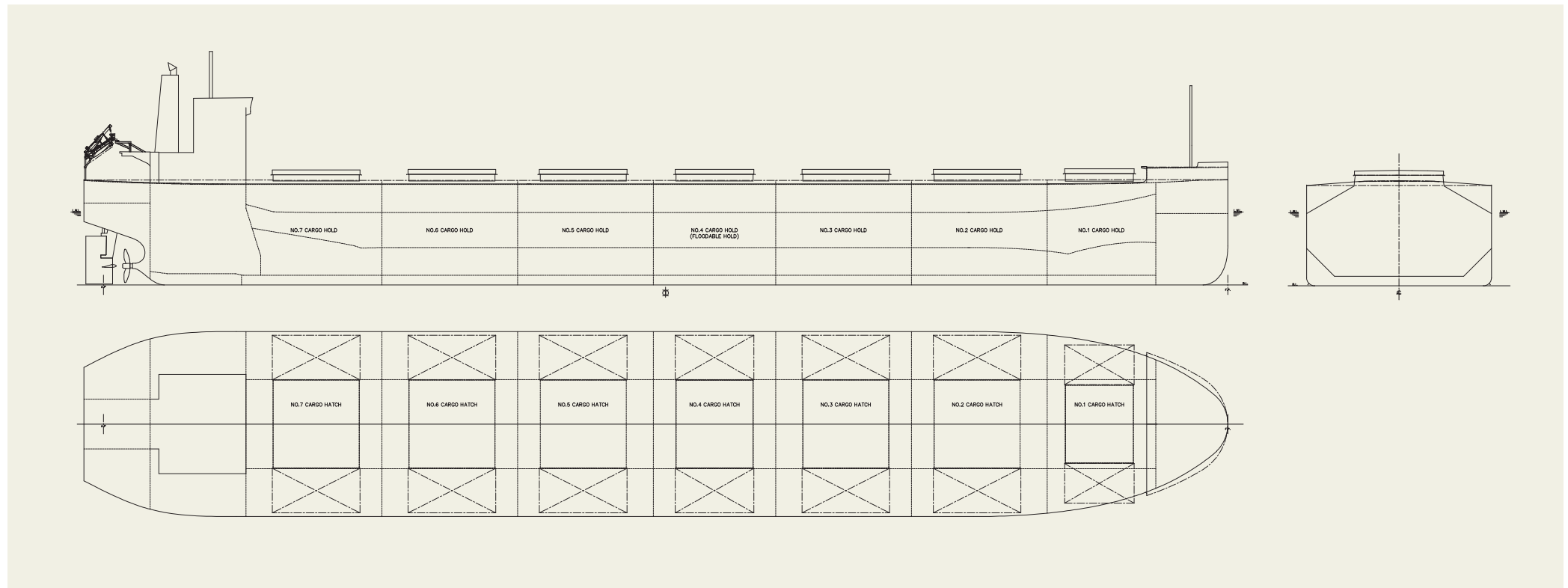
PRINCIPAL PARTICULARS

Length (o.a.).....	235.00 m
Breadth (mld.).....	40.00 m
Depth (mld.).....	20.00 m
Draft (mld.).....	14.415 m
Gross tonnage.....	54,244
Deadweight.....	99,990 MT

Main engine.....	MITSUI-MAN B&W 6G60ME-C10.5
MCR (kw x rpm).....	9,000 kW x 72.0 rpm
Speed (service).....	14.30 knots
Complement.....	25
Classification.....	ABS/CR<NK>
Loading capacity (grain).....	118,908 m ³
Builder.....	Oshima Shipbuilding Co., Ltd.

4. Special bow form, Seaworthy Bow improves speed

performance in rough sea conditions as compared to ordinary bows.



KAWA NAPRANUM 87,396 DWT Bulk Carrier 45



Contents



By Builder



By Ship Type





Contents



By Builder



By Ship Type

KAWA NAPRANUM 87,396 DWT Bulk Carrier 45

Oshima Shipbuilding Co., Ltd. delivered KAWA NAPRANUM, a 87,396-DWT bulk carrier, to LUCRETIA SHIPPING, S.A. in November 2023.

Features

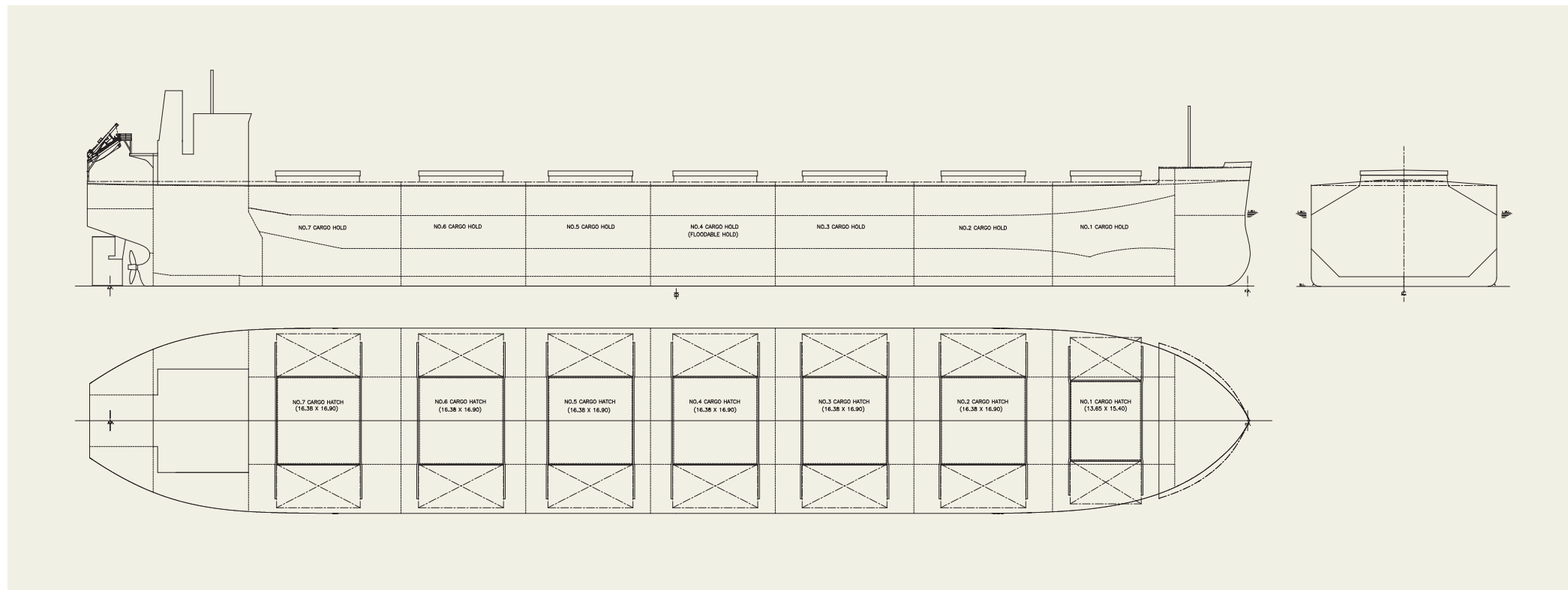
1. This vessel has an optimized hull form for carrying grain, ore, coal, and cement, and large deadweight(87,396 MT) with shallow draft (14.322m)
2. Wide hatch cover improves cargo handling efficiency.
3. Advanced Flipper Fins & Rudder Fin which improve propulsion efficiency are installed.

PRINCIPAL PARTICULARS

Length (o.a.).....	228.41 m
Breadth (mld.).....	36.50 m
Depth (mld.).....	20.39 m
Draft (mld.).....	14.322 m
Gross tonnage.....	48,105
Deadweight.....	87,396 MT

Main engine.....	MITSUI MAN B&W 5S60ME-C10.5-EGRBP
MCR (kw x rpm).....	8,180 kW x 84.0 rpm
Speed (service).....	14.30 knots
Complement.....	25
Classification.....	NK
Loading capacity (grain).....	106,222 m ³
Builder.....	Oshima Shipbuilding Co., Ltd.

4. Special bow form, Seaworthy Bow improves speed performance in rough sea conditions as compared to ordinary bows.



NORD ACE 87,404 DWT Bulk Carrier 46



Contents



By Builder



By Ship Type



NORD ACE 87,404 DWT Bulk Carrier 46

Oshima Shipbuilding Co., Ltd. delivered NORD ACE, a 87,404-DWT bulk carrier, to T.H. CORP., S.A. in September 2024.

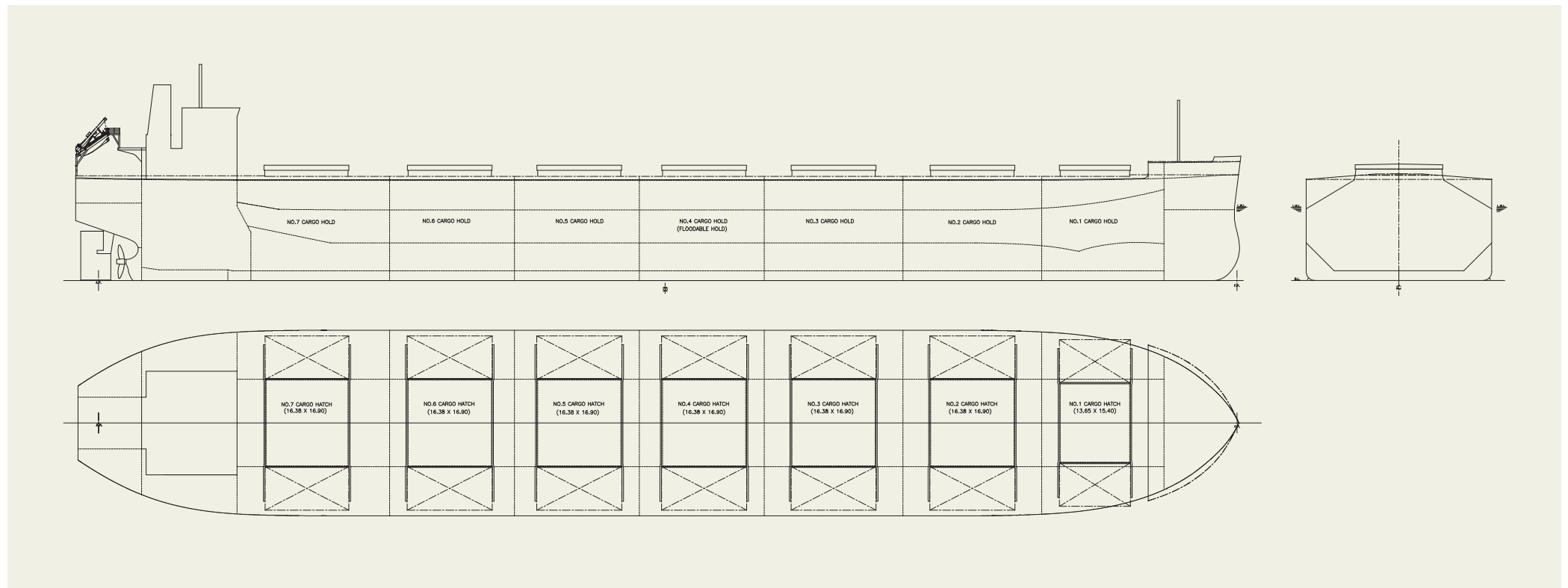
Features

1. This vessel has an optimized hull form for carrying grain, ore, and coal, and large deadweight (87,404 MT) with shallow draft (14.322m)
2. Wide hatch cover improves cargo handling efficiency.
3. Advanced Flipper Fins & Rudder Fin which improve propulsion efficiency are installed.
4. Special bow form, Seaworthy Bow improves speed

PRINCIPAL PARTICULARS

Length (o.a.).....	228.41 m	Main engine.....	MITSUI MAN B&W 5S60ME-C10.5-EGRBP
Breadth (mld.).....	36.50 m	MCR (kw x rpm).....	8,180 kW x 84.0 rpm
Depth (mld.).....	20.39 m	Speed (service).....	14.30 knots
Draft (mld.).....	14.322 m	Complement.....	25
Gross tonnage.....	48,223	Classification.....	NK
Deadweight.....	87,404 MT	Loading capacity (grain).....	106,171 m ³
		Builder.....	Oshima Shipbuilding Co., Ltd.

performance in rough sea conditions as compared to ordinary bows.



SOL EXPLORER 95,552 DWT Bulk Carrier 47



Contents



By Builder



By Ship Type





Contents



By Builder



By Ship Type

SOL EXPLORER 95,552 DWT Bulk Carrier 47

Oshima Shipbuilding Co., Ltd. delivered SOL EXPLORER, a 95,552-DWT bulk carrier, to Japan Ship Management Co., Ltd. in June 2024.

Features

1. This vessel has an optimized hull form for carrying grain, ore, and coal, and large deadweight (95,552 MT) with shallow draft (14.35m).
2. This vessel is equipped with state-of-the-art Fuel Tank and Supply system the vessel also features a unique LNG tank arrangement.
3. The LNG storage tanks are installed on the upper deck, located aft of the accommodation block.

PRINCIPAL PARTICULARS

Length (o.a.).....	234.98 m
Breadth (mld.).....	38.00 m
Depth (mld.).....	20.16 m
Draft (mld.).....	14.35 m
Gross tonnage.....	54,281
Deadweight.....	95,552 MT

Main engine.....	DU WinGD 6X62DF-2.1 with VCR
MCR (kw x rpm).....	9,400 kW x 81.0 rpm
Speed (service).....	13.80 knots
Complement.....	27
Classification.....	NK
Loading capacit (grain).....	109,728 m ³
(Builder.....)	Oshima Shipbuilding Co., Ltd.

4. By using LNG as its main fuel, the vessel will significantly reduce its environmental impact compared to heavy oil-fueled vessels
5. Advanced Flipper Fins & Rudder Fin which improve propulsion efficiency are installed.
6. Special bow form, Seaworthy Bow improves speed performance in rough sea conditions as compared to ordinary bows.

