

MAPLE 4,097 MT Petroleum/Chemical Tanker 34



Contents

By Builder

By Ship Type





Contents



By Builder



By Ship Type

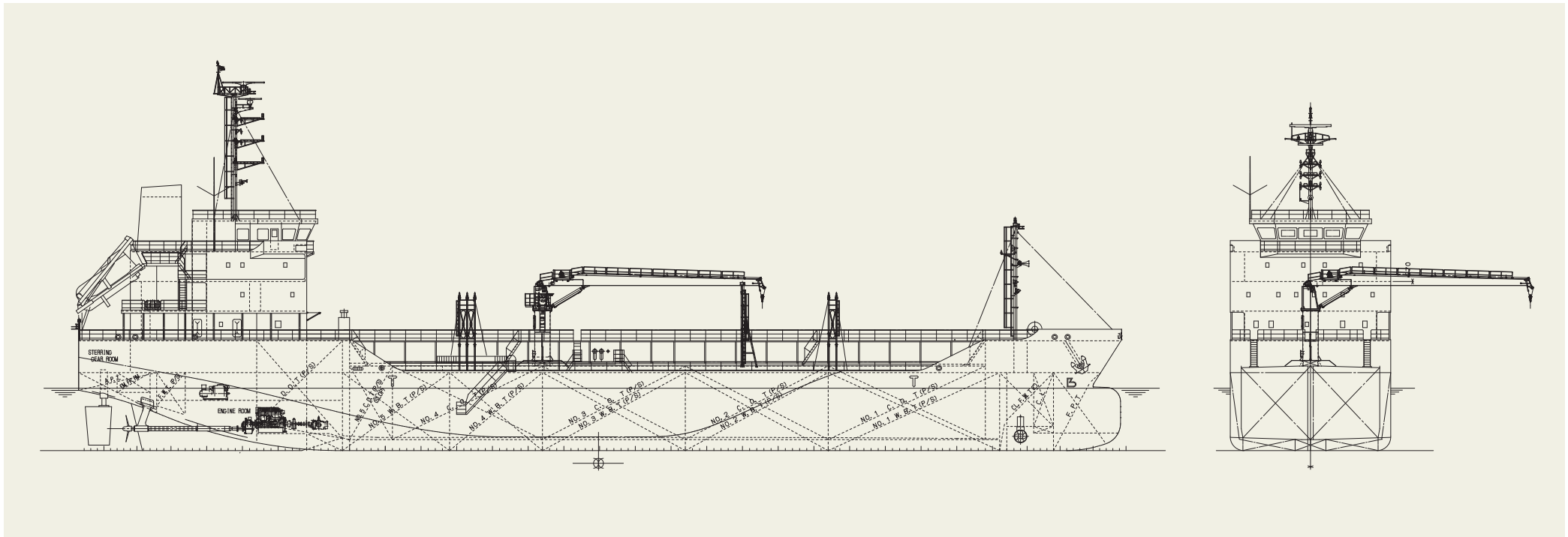
MAPLE 4,097 MT Petroleum/Chemical Tanker 34

This vessel is a petroleum / chemical product carrier specifically designed for carrying methanol and bio diesel oil, and is the first methanol bunker ship to be registered in Singapore.

This vessel employs a twin-screw configuration with two propulsion units and 1 set of bow thruster, achieving high maneuverability required by Singapore port regulations. The fresh water generator of reverse osmosis desalination type is installed for enabling water production of 10ton/day.

PRINCIPAL PARTICULARS

Length (o.a.).....	94.92 m	MCR (kw x rpm).....	956 kW x 850 min ⁻¹
Length (b.p.).....	90.00 m	NOR (kw x rpm).....	813 kW x 805 min ⁻¹
Breadth (mld.).....	14.60 m	Speed (max. trial).....	12.264 knots
Depth (mld.).....	7.10 m	(service).....	11.500 knots
Draft (mld.).....	5.68 m	Complement.....	19 persons
Gross tonnage.....	2,999	Classification.....	BV
Deadweight.....	4,097 MT	Cargo pump.....	TAIKO, CSL-500MS (500 m ³ /h x 0.75MPa)
Main engine.....	YANMAR, 6N21A-EW x 2 sets	Loading capacity.....	4,445 m ³
		Builder.....	Sasaki Shipbuilding Co., Ltd.



CHEMROAD KAIA 35,000 DWT Oil/Chemical Tanker 35



Contents



By Builder



By Ship Type



CHEMROAD KAIA 35,000 DWT Oil/Chemical Tanker 35

The 35,000 dwt type chemical carrier CHEMROAD KAIA was built at SHIN KURUSHIMA DOCKYARD CO., LTD. and delivered to the Panamanian Owner in August 2025.

Features

1. The vessel was built for ocean transport of chemicals (IMO type II and III) and oil products.
2. The vessel has eighteen (18) cargo tanks (including slop tanks) constructed of SUS316LN stainless steel and SUS316L clad steel.
3. All cargo tanks are of double-hull structure and have sufficient strength to permit the carriage of a full cargo with a specific gravity of 1.30 t/m³.
4. Structures protruding into the tanks have been minimized by using an on-deck girder system for the upper deck and vertical corrugated type bulkheads.

PRINCIPAL PARTICULARS

Length (o.a.)	172.98 m
Length (b.p.)	166.50 m
Breadth (mld.)	28.20 m
Depth (mld.)	17.20 m
Draft (mld.)	11.40 m
Gross tonnage	23,471
Deadweight	35,769 t
Main engine	6UEC50LSH-Eco-C3-EGR
MCR (kW x rpm)	6,600 kW x 89.0 min

NOR (kW x rpm).....	5,610 kW x abt. 84.5 min
Speed (service)	14.5 knots
Complement	30P
Classification.....	NK
Cargo pump.....	Submerged type
	300 m ³ /h x 115 mLC (SG=0.80) x 14 sets
	200 m ³ /h x 115 mLC (SG=0.80) x 4 sets
	70 m ³ /h x 70mLC (SG=1.00) x 1 set (Portable type)
Loading capacity (tank).....	39,827 m ³
Builder.....	Shin Kurushima Dockyard Co., Ltd.

5. Each cargo tank is equipped with one (1) submerged cargo pump driven by a hydraulic motor; these are remotely controlled from the cargo control room.
6. Cargo handling is simplified by a 10 metric-ton

hydraulically operated deck crane for hose handling; it is arranged a midship on the upper deck.

