

# NAVE OHANA 52,000 MT Product/Chemical Tanker 30



Contents



By Builder



By Ship Type





Contents

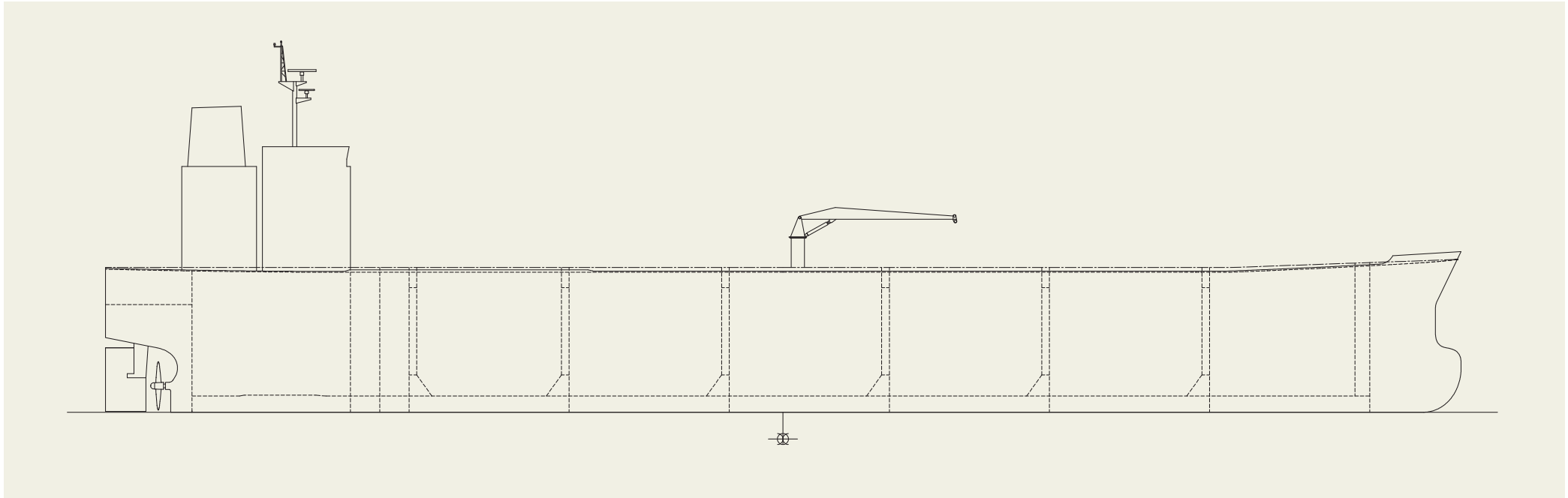


By Builder



By Ship Type

# NAVE OHANA 52,000 MT Product/Chemical Tanker 30



## PRINCIPAL PARTICULARS

Length (o.a.).....	184.94 m	Deadweight .....	49,994 tons
Breadth (mld.).....	32.20 m	Main engine.....	6S50ME-C10.6
Depth (mld.).....	19.10 m	Speed (service).....	abt.14.5 knots
Gross tonnage .....	30,591	Classification.....	NK
		Builder.....	Minaminippon Shipbuilding Co., Ltd. of the Group



# KYOKUHO MARU

5,538 MT Product Carrier 31



Contents



By Builder



By Ship Type



# KYOKUHOU MARU 5,538 MT Product Carrier 31

This vessel is a Japanese domestic petroleum product carrier, which is carrying the products with flash point below 60°C .

This vessel has 2-stroke main engine capable to keep service speed and navigate about 5,000 seamiles.

This vessel is equipped with a Super-VectTwin rudder system to achieve both high maneuverability and propulsion efficiency.

The design achieves MO on NK-class, enabling MO operation to reduce the burden on engine room watchkeeping personnel.

For energy-saving measure, a bulbous bow and stern fins are adopted for the hull form. Stern fins are installed to maintain a good flow into the propeller to improve propulsion

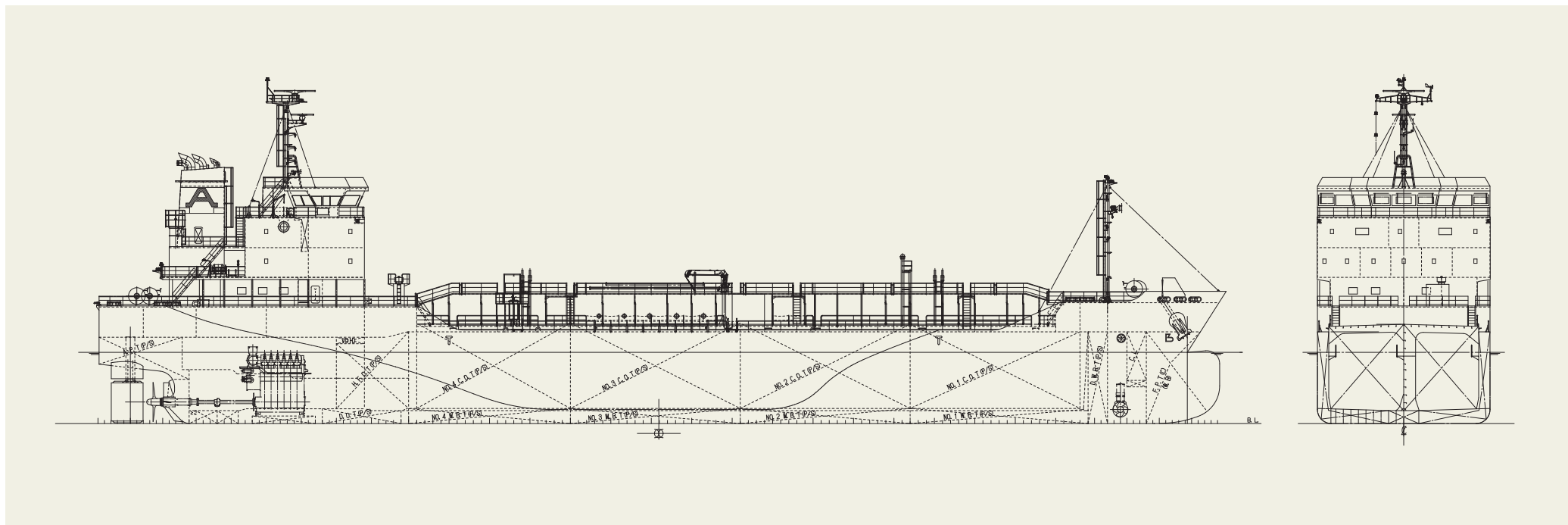
## PRINCIPAL PARTICULARS

Length (o.a.).....	104.53 m	MCR (kw x rpm).....	3,900 kW x 210 min <sup>-1</sup>
Length (b.p.).....	98.00 m	NOR (kw x rpm).....	3,315 kW x 198.9 min <sup>-1</sup>
Breadth (mld.).....	16.00 m	Speed (max. trial).....	14.281 knots
Depth (mld.).....	8.50 m	(service).....	13.500 knots
Draft (mld.).....	6.613 m	Complement.....	16 persons
Gross tonnage.....	4,123	Classification.....	NK
Deadweight.....	5,538 MT	Loading capacity.....	6,120 m <sup>3</sup>
Main engine.....	IMEX, HITACHI-MAN B&W 6L35MC6.1	Builder.....	Sasaki Shipbuilding Co., Ltd.

efficiency and reduce fuel consumption.

All cabins are made as private and the specified one room is

arranged to allow female crew onboard.



# NEW TAIWAN FUEL 1,440 MT Product Carrier 32



Contents



By Builder



By Ship Type





Contents



By Builder



By Ship Type

# NEW TAIWAN FUEL 1,440 MT Product Carrier 32

This vessel is a petroleum product carrier specifically designed for bunkering ship, that carries HSHFO, LSHFO, MGO and LSMGO within its 8 tanks.

This vessel is registered under flag of ROC and is available to cruising area of Taiwan (30 nautical miles limited).

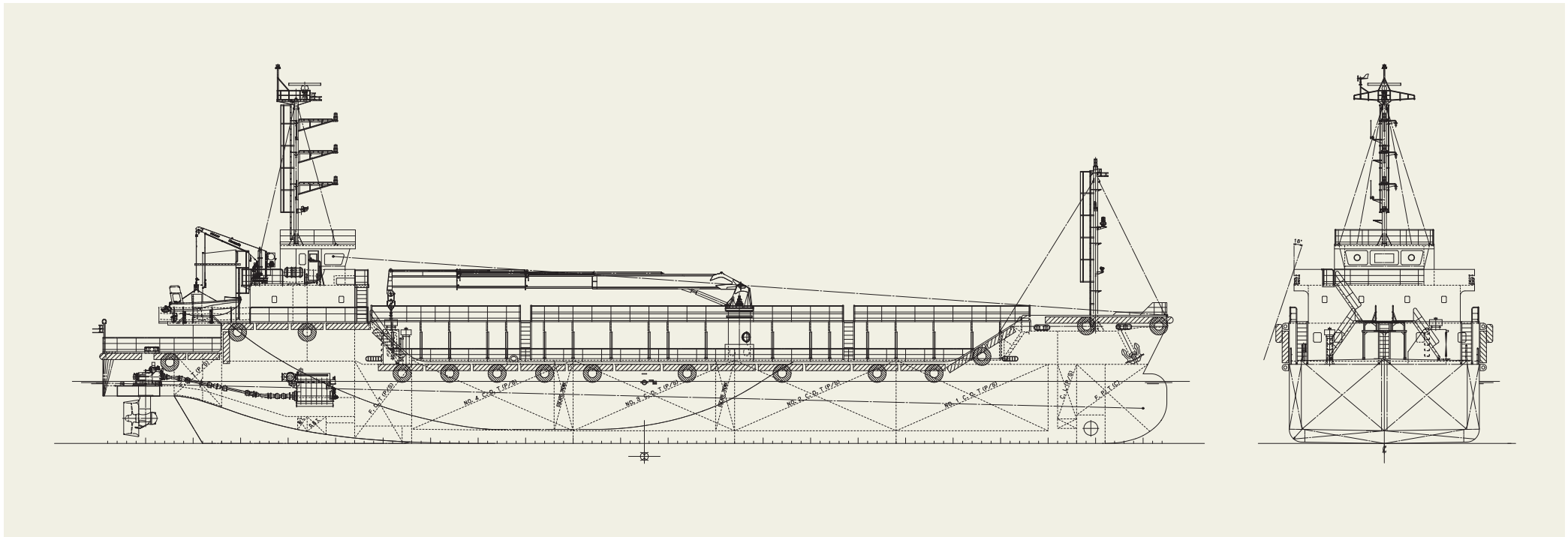
This vessel is equipped with 2 sets of Z-pellers and 1 set of bow thruster, achieving high maneuverability.

The hose handling crane is telescopic boom type having a max outreach of 22 meters.

The cargo pump can be remotely started, stopped and controlled, enabling cargo flow rate adjustment.

## PRINCIPAL PARTICULARS

Length (o.a.) .....	67.20 m	MCR (kw x rpm) .....	1,029 kW x 1,000 min <sup>-1</sup>
Length (b.p.) .....	63.00 m	NOR (kw x rpm) .....	874 kW x 947 min <sup>-1</sup>
Breadth (mld.) .....	12.00 m	Speed (max. trial).....	12.263 knots
Depth (mld.).....	5.00 m	(service).....	10.500 knots
Draft (mld.) .....	3.919 m	Complement .....	8 persons
Gross tonnage .....	996	Classification.....	CR
Deadweight .....	1,440 MT	Cargo pump.....	TAIKO, CSL-500PK x 2 sets (500 m <sup>3</sup> /h x 0.79 MPa)
Main engine.....	IHI, 6L22HX x 2 sets	Loading capacity .....	1,655 m <sup>3</sup>
		Builder.....	Sasaki Shipbuilding Co., Ltd.



# EISHIN MARU NO.28 5,000 DWT Oil Tanker 33



Contents



By Builder



By Ship Type



# EISHIN MARU NO.28 5,000 DWT Oil Tanker 33

The 5,000 dwt class Oil Tanker EISHIN MARU NO.28 was built at SHIN KURUSHIMA HASHIHAMA DOCKYARD CO., LTD. and delivered to Japanese Owner. in March 2024.

## Features

1. The vessel was built for ocean transport of oil products.
2. The vessel has twelve (12) cargo tanks constructed of Pure epoxy paint coating.
3. All cargo tanks are of double-hull structure and have sufficient strength to permit the carriage of a full cargo with a specific gravity of 1.025 t/m<sup>3</sup>.
4. Structures protruding into the tanks have been minimized

## PRINCIPAL PARTICULARS

Length (o.a.).....	104.93 m
Length (b.p.).....	98.00 m
Breadth (mld.).....	16.00 m
Depth (mld.).....	8.30 m
Draft (mld.).....	6.25 m
Gross tonnage.....	3,946
Deadweight.....	5,499 t
Main engine.....	AKASAKA A455

MCR (kW x rpm).....	3,309 kW x 220 min <sup>-1</sup>
NOR (kW x rpm).....	2,813 kW x abt. 208 min <sup>-1</sup>
Speed (service).....	14.0 knots
Complement.....	15P
Classification.....	NK
Cargo pump.....	Screw type
	1,300 m <sup>3</sup> /h x 0.83 MPa x 2 sets (500 kW x 900 min <sup>-1</sup> )
Loading capacity (tank).....	6,499 m <sup>3</sup>
Builder.....	Shin Kurushima Hashihama Dockyard Co., Ltd.

by using an on-deck girder system for the upper deck and vertical corrugated type bulkheads.

